



Sinclair Hammelton

GUIDE PRICE

£500,000

Mapleton Close

, BR2 9DU

PROPERTY SUMMARY

GUIDE PRICE *** £500,000 TO £550,000 ***

Sinclair Hammelton are proud to bring to the market CHAIN FREE this three bedroom town house. The property is conveniently located being under a mile to both Bromley South and Hayes train stations and close to desirable schools. Living accommodation comprises: porch, entrance hallway where there is an integral garage and W/C. The first floor is flooded with natural light and offers dining room, sitting room and kitchen with direct access onto a private garden. To the second floor there are three bedrooms and a family bathroom. Further benefits include off street parking, gas central heating and double glazing. Viewing highly recommended.

EPC: C

Freehold

COUNCIL TAX - E

Construction - Traditional

Mains Services - Yes and metered Water supply

Heating System - Gas radiators

3



1



2





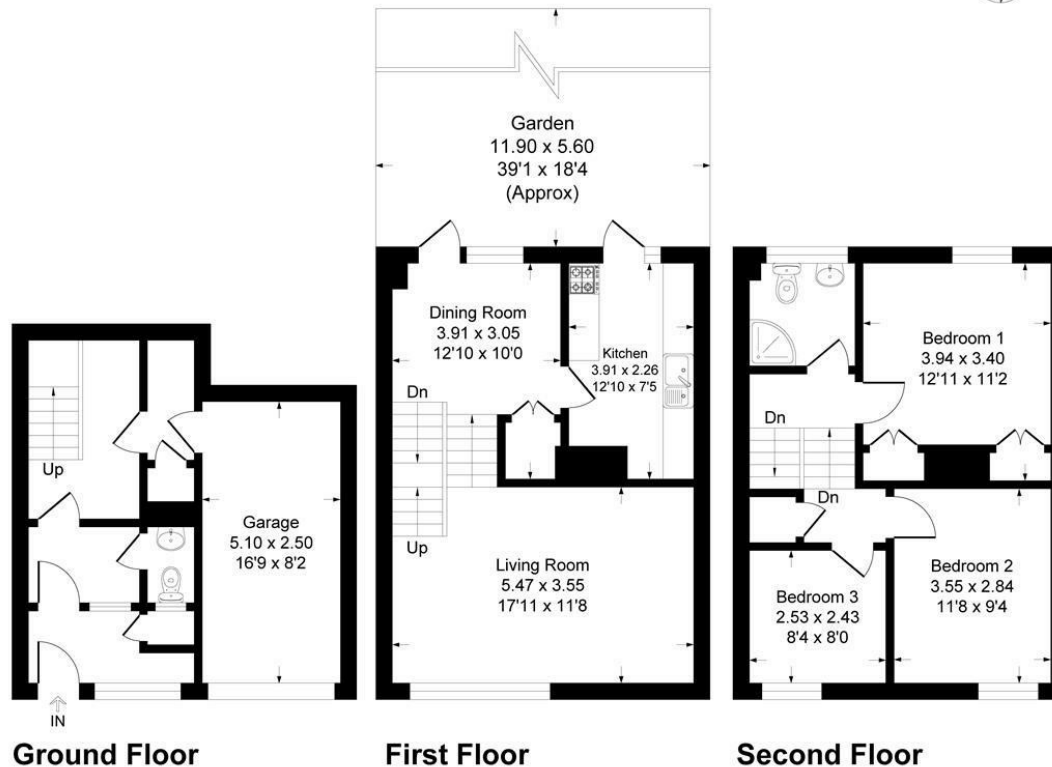


Mapleton Close, BR2

Approximate Gross Internal Area = 101.7 sq m / 1095 sq ft

Garage = 12.7 sq m / 137 sq ft

Total = 114.4 sq m / 1232 sq ft



This plan is for layout guidance only. Not drawn to scale unless stated. Windows and door openings are approximate. Whilst every care is taken in the preparation of this plan, please check all dimensions, shapes and compass bearings before making any decisions reliant upon them.

Produced By Planpix

LOCAL AUTHORITY

TENURE

Freehold

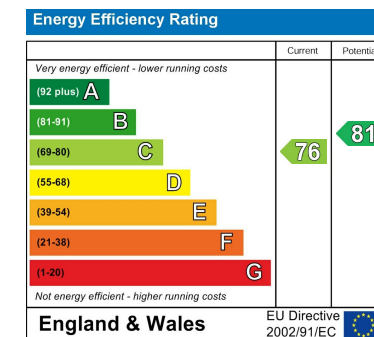
EPC RATING:

C

COUNCIL TAX BAND

VIEWINGS

By prior appointment only



Agents Note: Whilst every care has been taken to prepare these particulars, they are for guidance purposes only. All measurements are approximate and are for general guidance purposes only and whilst every care has been taken to ensure their accuracy, they should not be relied upon and potential buyers/tenants are advised to recheck the measurements

Sinclair Hammelton

OFFICE ADDRESS

23 High Street
Bromley
Kent
BR1 1LG

OFFICE DETAILS

0208 464 5566
info@sinclairhammelton.co.uk